

DOMINIQUE

■ DENAIVE ■

P A R I S

*Valse des Fleurs*

Spring / Summer 2025



## **Multico**

**Earrings Talia / Bracelet Marcella / Ring Dalina**



Earrings Jesse / Necklace Kitty  
Bracelet Gigi / Ring Rosalia



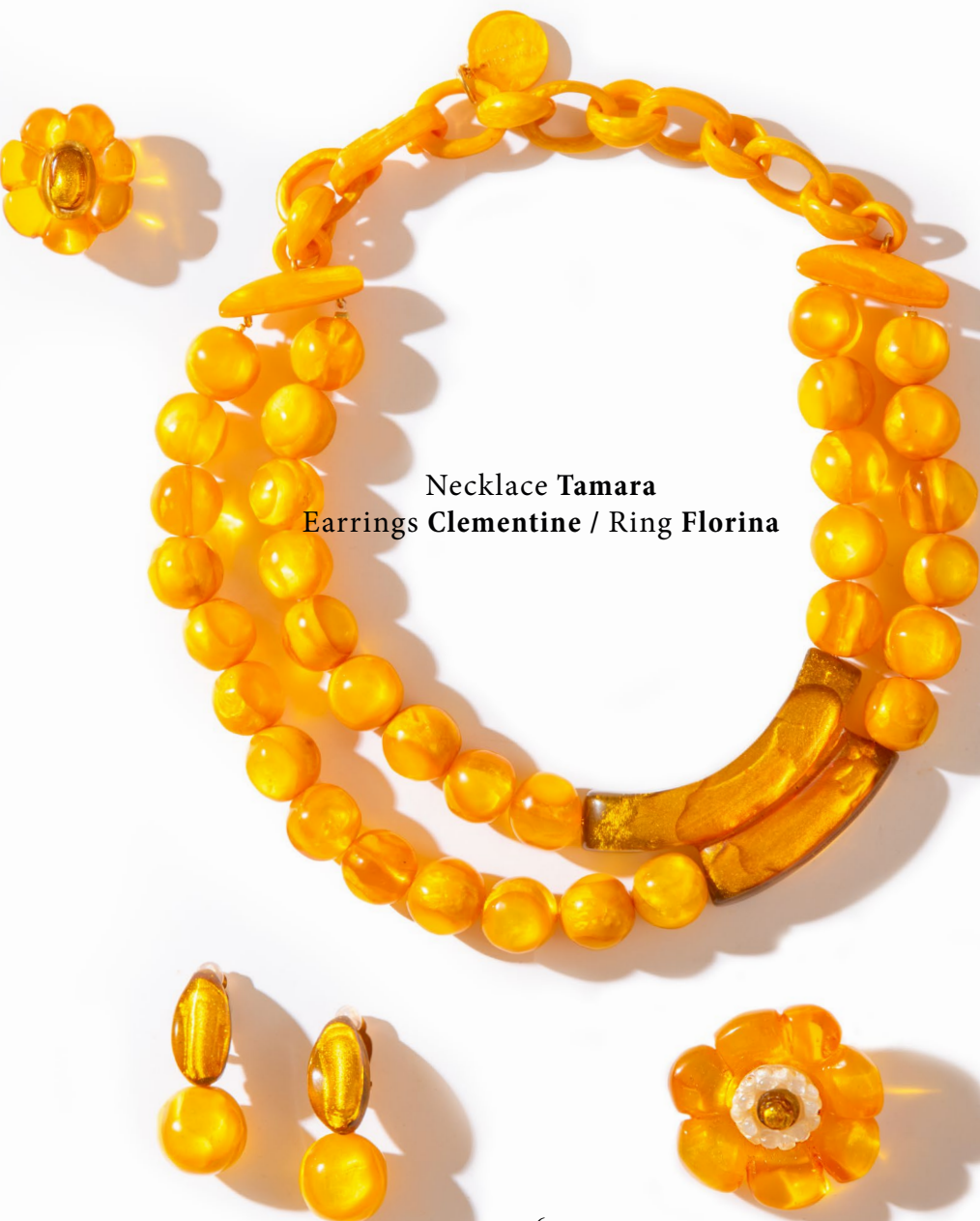
Earrings **Zola** / Necklace **Laurette**  
Bracelet **Louise** / Ring **Sia**

# Coral



Ring **Florina** / Necklace **Fanny**  
Brooch **Sia** / Brooch **Claudia**

# Ananas



Necklace Tamara  
Earrings Clementine / Ring Florina



Earrings Luz / Necklace Eva



## Multirose

Bracelet Blanca / Ring Magda  
Earrings Andrea / Necklace Andrea





A close-up photograph of a woman holding a bouquet of flowers. She is wearing a necklace and a bracelet made of large, pink, watermelon-cut gemstones. The flowers in the bouquet include large pink and white dahlias and smaller white daisies. The scene is brightly lit, creating strong shadows on her white top.

Babydoll

Ring Everly / Bracelet Andy



Earrings Coralie / Necklace Gabela  
Ring Everly

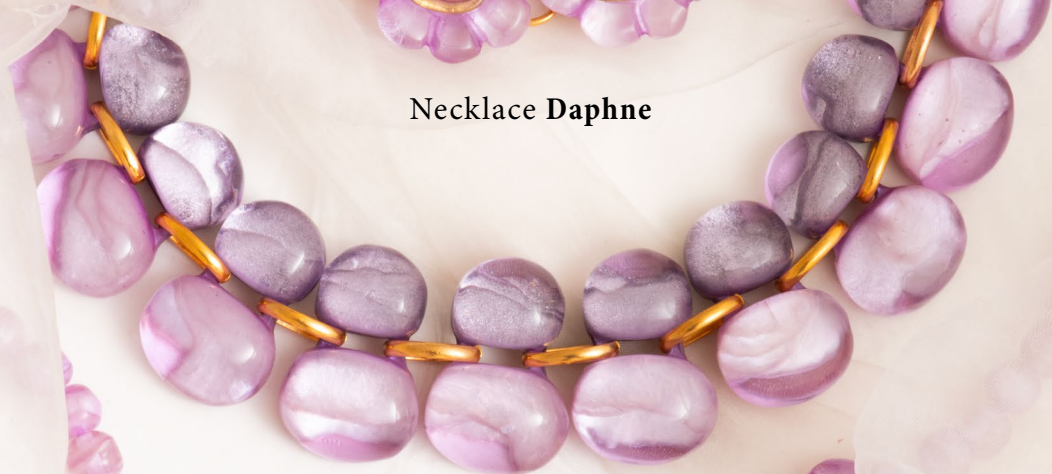
# Mauve



Bracelet **Andrea** / Ring **Milley**  
Earrings **Larissa** / Necklace **Della**



Necklace **Daphne**



Necklace **Andrea**



Necklace **Kitty**

# Nacre


Earrings **Marcella** / Necklace **Lisa**  
Bracelet **Lucinda** / Ring **Florina**



**Bracelet Daphne**



**Brooch Florina**



**Necklace Della**



## **Multibleu**

**Earrings Liliane / Necklace Mika / Ring Magda**





# Pistache



Necklace **Fanny**  
Ring **Diana** / Bracelet **Louise**



**Earrings Dana / Necklace Fanny**  
**Ring Diana / Bracelet Louise**

# RoyalBlue



Earrings **Clementina** / Necklace **Hema**  
Bracelet **Malia, Mara** / Ring **Rosalia**



# Spearmint



Necklace **Lucinda**  
Bracelet **Andrea**  
Ring **Florina, Daphne**



Necklace **Lucinda** / Bracelet **Andrea**  
Ring **Florina, Daphne** / Earrings **Annega**

# Valse des Fleurs



Étincelante et lumineuse, cette collection nous invite dans un magnifique jardin imaginaire au raffinement précieux. Elle met en avant le design de fleurs réinterprété en résine artisanale reflétant la lumière de façon spectaculaire. Cette lueur vibrante et dynamique de la résine polie à la main, filtrée par les pigments de couleur pastel, se diffuse également à travers des modèles entièrement composés de fleurs d'une grande variété de tailles et formes. Ce ballet de bijoux évoque la féminité intemporelle du chic parisien chère au créateur Dominique Denaive.

*Sparkling and luminous, this collection invites us into a magnificent imaginary garden of precious refinement. It highlights the flower design reinterpreted in artisanal resin reflecting the light in a spectacular way. This vibrant, dynamic glow of hand-polished resin, filtered by pastel-colored pigments, also diffuses through designs composed entirely of flowers of a wide variety of sizes and shapes. This ballet of jewelry evokes the timeless femininity of Parisian chic dear to designer Dominique Denaive.*

**DOMINIQUE DENAIVE**

Since 1981

Retail-Wholesale-Press

7 rue du 29 Juillet 75001 - Paris (France)

+33(0)1 42 61 78 22

contact@denaive.com

